



Moore House, 2 Gatliff Road
London SW1W

GARTON JONES.COM



Moore House, 2 Gatliff Road London, SW1W

£725 Per Week

GARTON JONES.COM

8 Gatliff Road
Grosvenor
Waterside
Chelsea
London
SW1W 8DP

Sales +44 (0) 20 7730 5007
gws@gartonjones.com
www.gartonjones.com

A ONE DOUBLE BEDROOM apartment to RENT of approx. 572 sq.ft (53.1 sq.m) in Moore House, Grosvenor Waterside development in Chelsea. This FURNISHED property benefits from an open plan reception room, a kitchen with integrated appliances, UNDERFLOOR HEATING, wood flooring, a modern bathroom and good storage including fitted wardrobes to the bedroom and a utility cupboard housing a washing machine. 24 HOUR CONCIERGE, GYM & SPA. On-site Sainsbury's Local, coffee shop and private kids club. SLOANE SQUARE & VICTORIA station with Gatwick Express are within walking distance.

Available via Garton Jones' on-site office at Grosvenor Waterside (underneath Bramah House).

Please note the furniture may differ or not be included to that that shown in current photos.

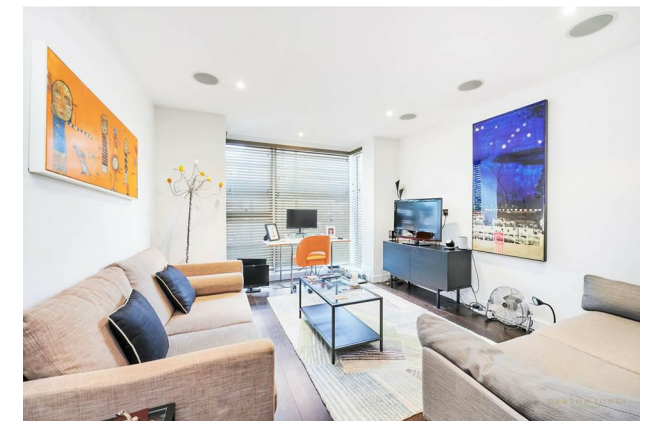
Council Tax: Westminster Council (band E)

12 month minimum term. 5 week deposit required.

EPC Rating: 82 (B)

EPC certificate available on request.

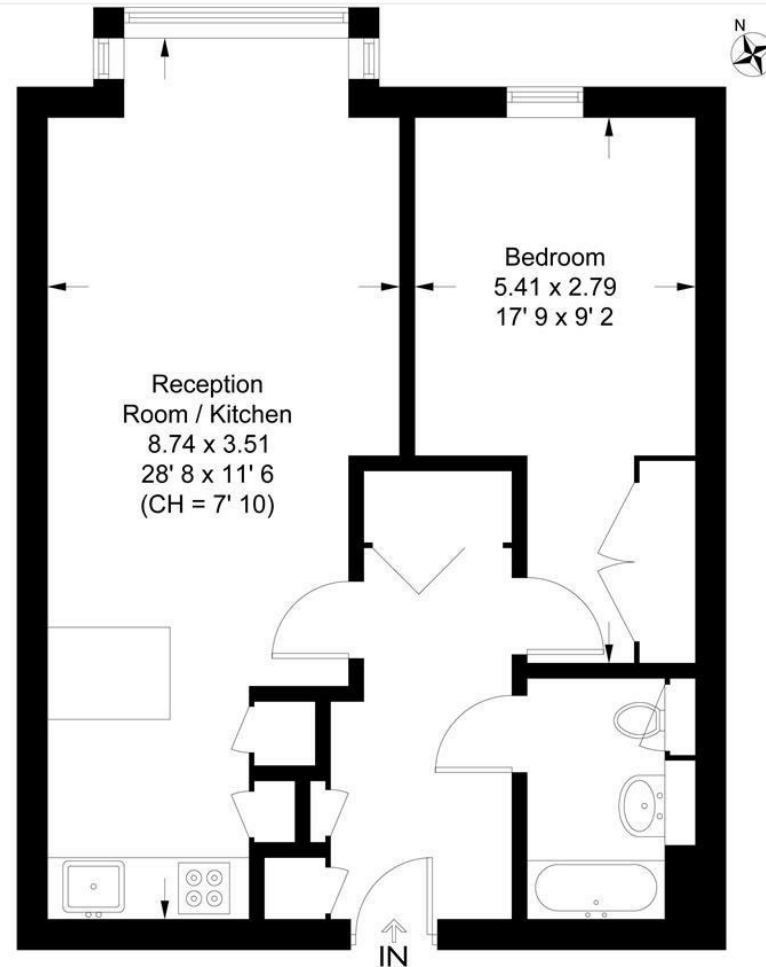
- 572 Sq.ft (53.1 Sq.m)
- 1 Bedroom Apartment
- Open Plan Reception Room
- Modern Kitchen
- Bathroom
- 24 Hour Concierge
- Underfloor Heating
- Smart Leisure Suite With Gym & Spa Facilities
- On-Site Sainsbury's & Close To Sloane Square Transport Links & Amenities



Moore House

Approximate Gross Internal Area = 572 sq ft / 53.1 sq m

GARTON JONES
LONDON



This plan is not to scale and must be used as layout guidance only. All measurements and areas are approximate and should not be relied upon to provide accurate information. This plan must not be relied upon when making property valuations, design considerations or any other such relevant decisions. We accept no responsibility or liability (whether in contract, tort or otherwise) in relation to any loss whatsoever arising from or in connection with any use of this plan or the adequacy, accuracy or completeness of it or any information within it.



